



**COGNEX**  
ID PRODUCTS



**DataMan**  
HANDHELD ID READERS

# READ EVERY MARK ON EVERY PART...EVERY TIME

The DataMan™ 6400 and 6500 are handheld ID readers that provide outstanding performance on direct part mark Data Matrix™ codes. These codes are produced by dot peen, laser, electro-chemical etch, and inkjet markers – on a variety of surfaces such as metal, glass, ceramic, and plastic.

DataMan readers incorporate IDMax™, a breakthrough in Data Matrix reading software based upon Cognex patented PatMax® technology. IDMax handles a wide range of degradations to the appearance of the code, no matter what the cause, allowing DataMan readers to deliver the industry's most reliable reading within a compact, easy-to-use handheld reader.

Two DataMan models are available to meet the requirements of marking processes commonly used to apply permanent marks on parts for traceability.

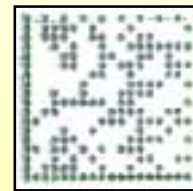
The **DataMan 6400** incorporates diffuse bright-field LED illumination for reading laser or inkjet marks where the contrast may vary due to changes in background and/or process variability.

The **DataMan 6500** uses both diffuse bright-field and a unique dark-field LED illumination method for reading the extremely low-contrast codes formed by electro-chemical etch and dot peen processes. And, an optional diffuser allows reading codes marked on curved surfaces.

## *Outstanding Performance with Problem 2D Codes*



*Poor Focus*



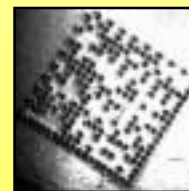
*Model Image*



*Washed Out*



*Low Contrast*



*Finder Degradation*



*Background Problems*

# DataMan

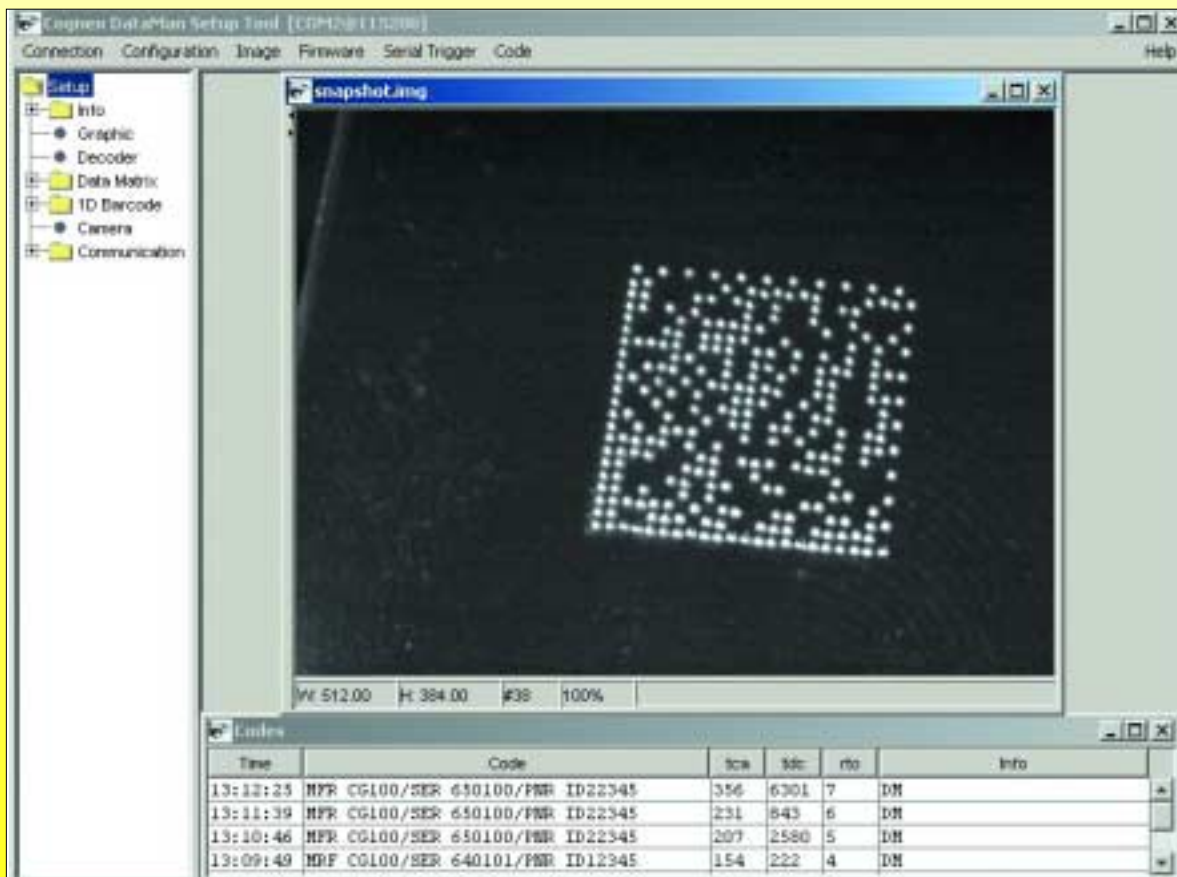
# FAST AND SIMPLE SETUP AND OPERATION

DataMan handheld readers are fast and simple to set up – even for first-time users. They are easily configured using a drop-down list for selecting communications, lighting, beeper operation, and output.

The readers provide laser-like scanning performance with a consistent “trigger to good read beep” of less than 1 second to deliver accurate and fast decoding and return of results – even on hard-to-read direct part marks, making the operators job simple and error-free.

## **Advantages**

- *Includes IDMax – The industry’s most robust and reliable Data Matrix reading software available*
- *Quick setup and configuration*
- *Rugged, ergonomic, lightweight design*
- *Integrated aiming*
- *Omni-directional reading*
- *High-performance processor and software provide quick trigger-to-read responsiveness*



*In addition to displaying data and images, the DataMan graphical user interface makes application setup and configuration fast and easy.*

# RELIABLE CODE READING FOR MANY INDUSTRIES

Cognex ID readers provide high-read rates on difficult-to-read codes on production lines or where parts are handled manually. This high degree of reliability ensures the economic return required by part traceability objectives, such as in Direct Part Mark Identification (DPMI) applications.



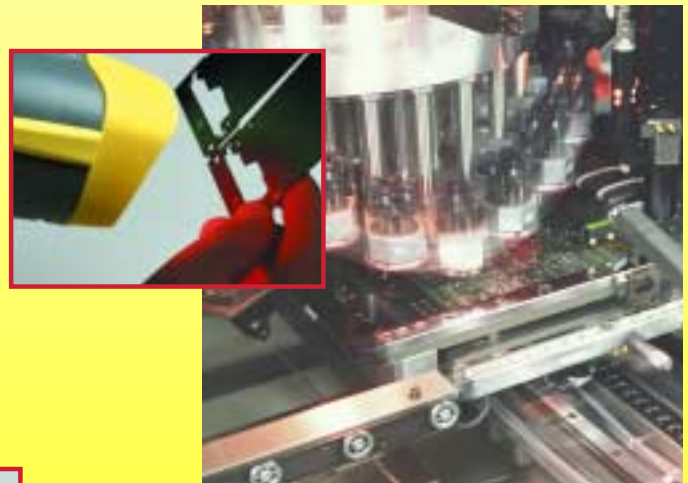
## **Aerospace**

*Data Matrix codes have been adopted by the Aerospace industry to identify and track parts through production, as well as through the life of the parts.*



## **Automotive Parts**

*The DataMan 6500 reads 2D Data Matrix codes direct-marked on a part.*



## **Electrical Components**

*Electronics manufacturers moving from bar code labels to Data Matrix due to space constraints and the need to include more data on parts use DataMan readers to identify boards and components.*



## **Medical Equipment and Devices**

*Data Matrix codes support the initiative of Unique Identification Marks (UIM) on medical devices.*



## **LIGHTWEIGHT, ALL-IN-ONE DESIGN**

- Built-in lighting
- Rugged, ergonomic, lightweight design
- Polycarbonate housing with rubber bumpers and shock-mounted electronics
- Quick trigger-to-read responsiveness
- RS-232 or keyboard wedge communications interface
- Presentation mode operation is available

# SPECIFICATIONS

## ID Tools

2D	Data Matrix, QR Code
Bar code	EAN13, UPC-A, EAN8, UPC-E, Interleaved 2 of 5, Code 11, Code 39, Code 128

## Image

Sensor	High-resolution pixel array
--------	-----------------------------

## Lighting/Optics

### DataMan 6400

Illumination	Integrated diffuse LED
Reading direction	Omni-directional, different pitch and skew (off-axis) angles up to 20 degrees
Aiming	Single red LED aimed at center of field of view

### DataMan 6500

Illumination	Integrated diffuse bright-field and dark-field LED
Reading direction	Omni-directional, different pitch and skew (off-axis) angles up to 20 degrees
Aiming	Single red LED aimed at center of field of view

## I/O

Trigger	Via trigger switch in the handle or via PC Software
Additional outputs	Multifunctional LED and beeper to indicate good read, device status, or errors

## Communications

Interfaces	RS-232 for data communication, set-up, and image preview
	Keyboard wedge

## Power

Electrical requirements	12VDC, 4 Watts
-------------------------	----------------

## Mechanical

Dimensions	180mm (7.09 in) x 68mm (2.68 in) x 90mm (3.54 in)
Material	Polycarbonate / ABS blend housing
Weight	170g (6.00 oz)

## Environmental

Operating temperature	0°C to +40°C (32°F to +104°F)
Operating humidity	0% – 95%, non-condensing
Storage temperature	-40°C to +70°C (-40°F to +158°F)
Storage humidity	0% – 95% non-condensing
Drop Test	25 drops from 2 meters onto concrete
Certifications	CE, (FCC, UL, and CSA pending)

## Optional Accessories

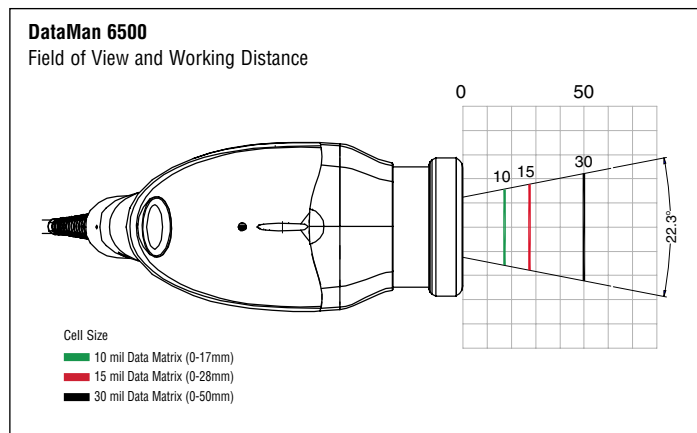
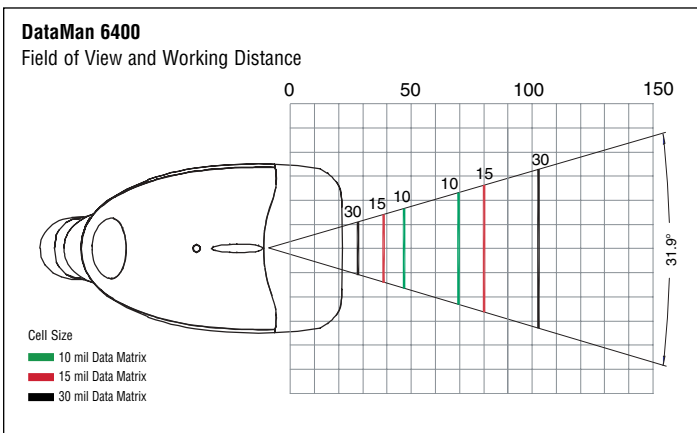
DataMan 6500 Diffuser	Enhances the reading performance of codes directly marked onto curved surfaces
DataMan Stand	Facilitates presentation-mode reading applications
Belt and Overhead Retractors	Allows DataMan readers to automatically retract from the reading position

**New Report is a "Must" for Direct Part Marking**

**Implementing Direct Part Mark Identification (DPMI) - 10**

**Important Considerations** is an in-depth look at the most important factors to consider when implementing DPMI for total traceability.

**For your free copy, go to [www.cognex.com](http://www.cognex.com)**



**COGNEX**  
Vision for Industry®

**Corporate Headquarters**  
Cognex Corporation  
One Vision Drive  
Natick  
MA 01760-2059  
USA  
Tel: (508) 650-3000  
Fax: (508) 650-3344  
[www.cognex.com](http://www.cognex.com)

## Primary Sales Offices

**United States** [www.cognex.com](http://www.cognex.com)

Eastern Region (508) 652-3880  
Natick, Massachusetts

Southern Region (615) 844-6158  
Nashville, Tennessee

Central Region (248) 668-5100  
Detroit, Michigan

Midwest Region (630) 649-6300  
Chicago, Illinois

Western Region (650) 969-4812  
Mountain View, California

**Europe** [www.cognex.net](http://www.cognex.net)

France +33 1 4777 1550  
Germany +49 721 6639 0  
Ireland +353 1 825 4420  
Italy +39 02 6747 1200  
Netherlands +31 402 668 565  
Sweden +46 21 14 55 88  
Switzerland +41 71 760 05 57  
United Kingdom +44 1908 206 000

**Canada** [www.cognex.com](http://www.cognex.com)  
(905) 634-2726

**Japan** [www.cognex.co.jp](http://www.cognex.co.jp)  
+81 3 5977 5400

**Southeast Asia** [www.cognex.net](http://www.cognex.net)

China +86 21 6407 5835  
Korea +82 2 539 9047  
Singapore +65 6325 5700  
Taiwan +886 3 578 0060